

---

[Kaingo Private Game Reserve Pg1](#) | [Kaingo Elephant Lodge Pg3](#) | [Lodge Layout Pg4](#) | [Transfers Pg5](#)  
[Directions Pg5](#) | [General Information Pg6](#)

## Unique Selling Points

Kaingo is a game reserve of outstanding scenic beauty situated in the Waterberg. The reserve is run along pure, sustainable management and development principles, with an exceptionally low development and tourist footprint offering unrivalled exclusivity and privacy. Family owned Kaingo offers guests incredible ecological diversity in a 'Conservation First' reserve, where all guest income goes towards positive conservation efforts. It offers guests unique wildlife experiences, thrilling activities and picturesque natural assets in abundance. There is a unique programme of activities for guests to tailor-make their stay. Kaingo is a family friendly establishment.

Sweeping across 22 500 acres of bush veld savannah, river, valley and magic mountain landscapes, Kaingo represents a piece of Africa as it used to be with the mighty Mokolo river weaving through breath taking landscapes.

## Malaria Free

Kaingo is situated in a malaria-free region of South Africa where the malaria carrying mosquito (Anopheles) is absent.

## Location

Kaingo Game Reserve lies about 250km north of Johannesburg on the Waterberg Plateau. A pleasant 2.5 to 3-hour drive or an easy 45-minute flight from Johannesburg/Pretoria into our airstrip. The reserve is easily accessible. Entrance gate GPDS coordinates: 24.06.49,13S 27.48.39,75E

## Best Time to Travel

Kaingo is an all-year-round safari destination where the variation in experience is temperature-related rather than safari-related (other than birds there are no migratory species). The best bird-watching period is from October to April.

## Activities

Morning and evening game drives in open safari vehicles • Bush walks • Bird watching • River cruise • Bush breakfasts • Bush dinners • River walks, Safari lunches • Fishing • Boma dinners • Bushman rock art • Botanical routes.

## Rates - Kaingo Elephant Lodge

Rates include: Luxury accommodation; all meals; teas/coffees; tailor made guest activities; two game drives daily; game drive refreshments and snacks; specified safari activities and Wi-Fi (all areas).  
Rates exclude: Gratuities; telephone; laundry; private safaris.

***Proudly Conservationist. Uniquely Waterberg. Incomparably Kaingo.***

Tel: +27 73 540 7266 | Tel: +27 87 150 1024 | Email: [reservations@kaingo.co.za](mailto:reservations@kaingo.co.za) | Web: [www.kaingosafari.com](http://www.kaingosafari.com)

Address: Witfontein Road | Vaalwater | South Africa

## Programme (typical daily programme)

Summer (Sept to April)	Programme	Winter (May to August)
05h00	Wakeup call	06h00
05h30	Tea / coffee and game drive departs	06h30
08h30	Game drive returns, then breakfast / brunch is served	09h30
At leisure	Bush walk or activities of personal preference	At leisure
13h00	Lunch	13h00
16h30	Game drive departs	16h00
19h30	Game drive returns and dinner follows	19h00

## Weather

The climate is typified by hot wet summers (September to April) and cool dry winters (May to August). Temperatures average around 25°C (77°F) but can get very hot during heat waves in mid-summer and quite cold at night in mid-winter. The region is classed as a semi-arid region, rainfall amounts to about 550 mm (20.5 inches) per year, with most of this falling in short, sharp thunderstorms in the late afternoons or at night, between November and March. Mean average temperatures – Summer: 25°C (77°F) to 40°C (104°F); Winter: 3°C (38°F) to 23°C (73°F).

## Access

**By Air:** 60 minute flight by helicopter from Johannesburg to our helipad. By airplane into Kaingo's private 1200m airstrip flights from Johannesburg take between 35 and 55 minutes – aircraft depending. Hangar facilities available at the airstrip which is an easy 10 minute transfer from the lodges. GPS CO-ORDINATES: 24 05' 06" S 27 47' 23" E

**By Road:** The driving time from Johannesburg is approximately 2.5 to 3 hours on good access roads. Our reservations team can send you detailed information on both flight and self-drive access options.

## Distance

Location	Travel Time	Kilometres	Miles
Oliver Tambo International Airport, Johannesburg	2 h 50 min	277 km	172 miles
Johannesburg	2 h 55 min	285 km	177 miles
Pretoria	2 h 30 min	235 km	146 miles

***Proudly Conservationist. Uniquely Waterberg. Incomparably Kaingo.***

Tel: +27 73 540 7266 | Tel: +27 87 150 1024 | Email: [reservations@kaingo.co.za](mailto:reservations@kaingo.co.za) | Web: [www.kaingosafari.com](http://www.kaingosafari.com)

Address: Witfontein Road | Vaalwater | South Africa

## Reference Table – Kaingo Elephant Lodge

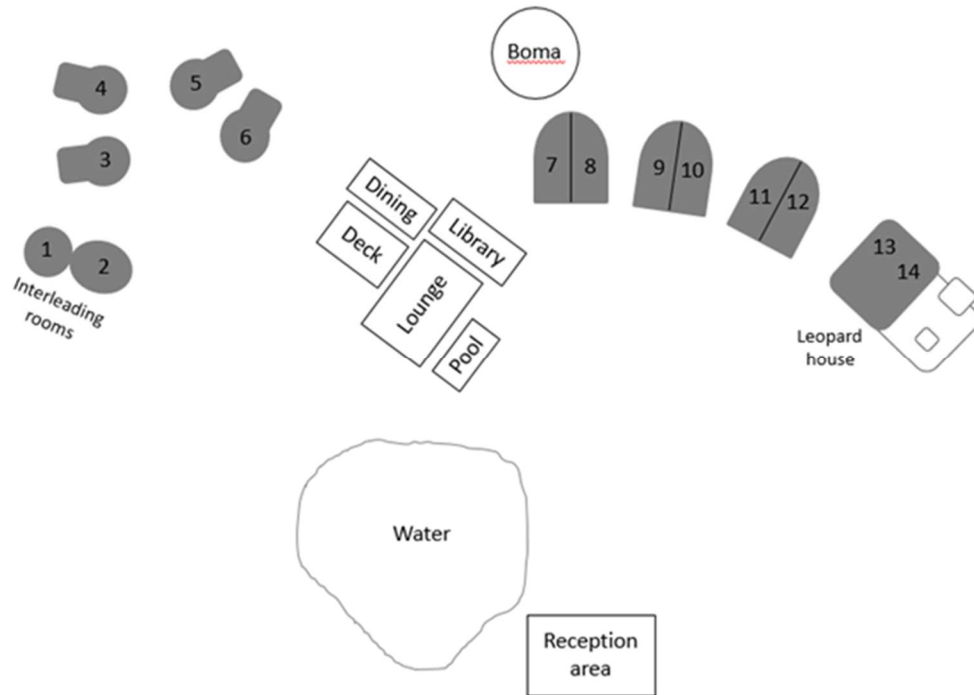
Reference	Elephant Lodge
Suites	12 Authentic Safari Rooms   Leopard House 2-bedroom villa
Size of suites	Safari rooms: 34 - 42 m <sup>2</sup> / 366 - 450 ft <sup>2</sup>   Leopard House 130 m <sup>2</sup> / 1400 ft <sup>2</sup>
Guests	28
Children	Yes, Welcome. 2 - 14 years old pay 50% of sharing adult rate.
Children on Safari	All ages welcome when accompanied by an adult
Children activities	Yes
Child minding / baby sitting	Yes, extra cost
Single traveler supplement	Yes, 50% supplement
Interleading rooms	Yes, 2 available
Double bed convertible to twin	Yes
Central public pool	Yes
Private plunge pool	Leopard House
Air-conditioning	Yes
Fireplace	Lounge/Library area
Free Wifi	Yes (Limited band width)
Satellite Television	All rooms except Leopard House.
Mobile coverage	Limited
In room safe	Yes
Full bathrooms (en-suite)	Yes. Shower, vanity, bath, W.C.
Minibar	Minibar fridge stocked at your request
Coffee/tea station	Yes
Hairdryers	Yes
Laundry	Yes, at extra cost
Distances between rooms	0 - 10m / 0 - 30ft
Meeting room	Yes, 12 people in meeting room. Larger group accommodated in hall area
Free parking for guest vehicles	Yes, under roof with security
Airstrip	Yes, 1200 strip with hangar facility
Helipad	Yes
Guests per safari vehicle	8 (up to 10 for families or groups)
Special dietary requests	Yes, with prior notice
Private safari vehicle daily rate	ZAR 3,500.00 per day
Gratuity recommendation	ZAR 200.00 – 300.00 per room per day (50% field guide and 50% lodge staff)
Power	220v AC
Credit cards	Visa and Master Card

***Proudly Conservationist. Uniquely Waterberg. Incomparably Kaingo.***

Tel: +27 73 540 7266 | Tel: +27 87 150 1024 | Email: [reservations@kaingo.co.za](mailto:reservations@kaingo.co.za) | Web: [www.kaingosafari.com](http://www.kaingosafari.com)

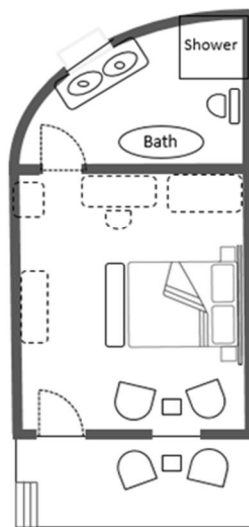
Address: Witfontein Road | Vaalwater | South Africa

## Lodge Layout - Kaingo Elephant Lodge

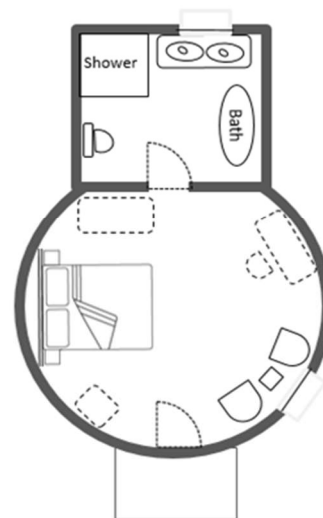


## Room Layouts

Size - 42 m<sup>2</sup> / 450 ft<sup>2</sup>



Size - 34 m<sup>2</sup> / 366 ft<sup>2</sup>



***Proudly Conservationist. Uniquely Waterberg. Incomparably Kaingo.***

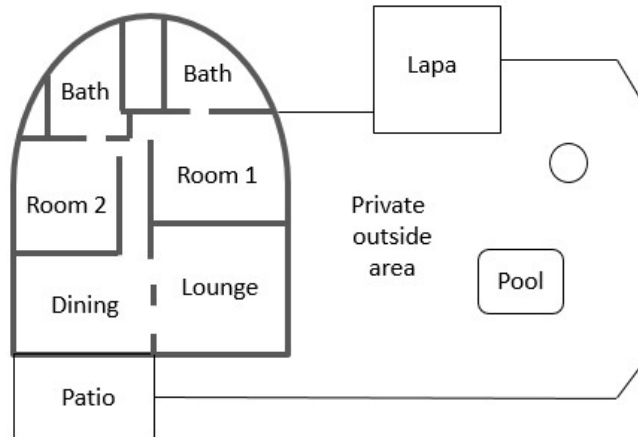
Tel: +27 73 540 7266 | Tel: +27 87 150 1024 | Email: [reservations@kaingo.co.za](mailto:reservations@kaingo.co.za) | Web: [www.kaingosafari.com](http://www.kaingosafari.com)

Address: Witfontein Road | Vaalwater | South Africa

---

## Leopard House Layout

Size - 130 m<sup>2</sup> / 1400 ft<sup>2</sup>



## Land and Air Transfers

Kaingo's reservations team can arrange and book a transfer service to and from Kaingo. Transfers by professional operators are offered in a range of luxury air-conditioned vehicles that can accommodate up to 22 guests. The transfer takes approximately 3 hours from Johannesburg airport. Transfers are available to and from any destination within South Africa.

## Directions (Recommended route from Johannesburg / Pretoria)

From O.R. Tambo International Airport, take the R21 to Pretoria. Take exit 134 onto the N1 North towards Polokwane. When reaching the Kranskop Toll Plaza keep to the very left lane onto the R33 towards Modimolle. Drive past Vaalwater, where the R33 becomes the R517. The Witfontein road turnoff to Kaingo Game Reserve is 38km from Vaalwater, on the R517 towards Thabazimbi. Drive about 6 km to the "Kaingo Game Reserve" gate on the left. The distance is approximately 280km and should take about approximately 2h45.

Please contact us on (+27) 87 150 1326 when you leave Vaalwater, so that we may know your estimated time of arrival. We will meet you at the gate, about 30 minutes after you have left Vaalwater.

Kaingo Game Reserve Main Gate: 24° 06'49.80" S 27°48'39.75"

***Proudly Conservationist. Uniquely Waterberg. Incomparably Kaingo.***

Tel: +27 73 540 7266 | Tel: +27 87 150 1024 | Email: [reservations@kaingo.co.za](mailto:reservations@kaingo.co.za) | Web: [www.kaingosafari.com](http://www.kaingosafari.com)

Address: Witfontein Road | Bulgerivier | Vaalwater | South Africa

---

## Packing Recommendations

As Kaingo Game Reserve is a malaria free area, there is no need for you to pack any malaria prophylactics, just your prescription medication. However, we do highly recommend that you bring:

- Cameras, lenses and binoculars
- Light, neutral coloured, clothing for summer safaris
- Bathing suits for the pool
- Good walking shoes as well as light sandals (ideal for summer September – April)
- Sunscreen and hats (even in winter)
- Warmer clothing for winter stays, including a scarf, gloves, beanies, a wind proof jacket and thermal fleece (it can be really cold on safari in the early morning and evening from May – August)

## General Terms and Conditions

### Rates

- All rates are quoted in South African Rand (ZAR) and include VAT at 15%.
- All rates above are based on a per person sharing per night basis.
- A 50% single supplement are charged
- Children (2 – 14 years) sharing with two adults are charged less 50% of the per person sharing rate
- A contract shall exist between the Client and Kaingo Game Reserve, once receipt of deposits/full payment has been received and Kaingo Game Reserve has issued confirmation of the booking. The Laws of the Republic of South Africa shall, in all respects, govern this contract.
- Infants (0 – 2 years) are accommodated free of charge
- Kaingo Reserve (Pty) Ltd reserves the right to amend all tariffs. Confirmed bookings at the time of the change shall be honoured at original rates.

### Tariff Includes

- Three meals per day: full English breakfast, light luncheon and dinner in the open-air boma or thatched dining room (Special bush dinners can be arranged at an extra cost).
- Tea, coffee, cakes, pastries and afternoon teatime snacks.
- Beverages: A selection of drinks including alcoholic beverages are included on the evening game drive sundowner stop.
- Two game drives daily in open safari vehicles, accompanied by experienced rangers.
- Twice daily housekeeping service

### Tariff Excludes

- Exclusive use of game viewer vehicle at Elephant Lodge. (Available at additional cost)
- Telephone calls
- Shop purchases

***Proudly Conservationist. Uniquely Waterberg. Incomparably Kaingo.***

- 
- Personal bar account, room mini-bar consumables and sundowner drinks
  - Laundry
  - Child minding service
  - Breakages and damages by guests

## General

- No pets allowed
- No Fire arms
- All terms and conditions, whether general or special, shall be interpreted and take effect according to the laws of South Africa. The Courts of South Africa shall have sole jurisdiction in respect of any claims which may arise between the client and Kaingo Game Reserve.
- Kaingo Game Reserve shall not be held responsible for any damage to or loss of any property whether belonging to the client or any of the guests, nor shall Kaingo Game Reserve be responsible for any personal injury which may be sustained by any guests or by any directors, servants or agents of the client, whether such damage or personal injury be caused by, or arise from the negligence of Kaingo Game Reserve or its employees or otherwise. The client hereby indemnifies Kaingo Game Reserve and all its directors, servants or agents of the client in respect of such personal injury, loss or damage.
- Guests are required to sign an indemnity form on arrival.
- All guests will be required to settle their accounts for extras, telephone calls, beverages, laundry, etc. on departure. This can be done by credit card or local currency notes.
- Check in time 14h00, check out time 11h00.
- Insurance: We recommend that all guests have sufficient travel insurance to cover injury, medical costs, emergency evacuation, repatriation, loss or damage to personal belongings and cancellation.

Smoking is not permitted within any of the Rooms or Public Areas

***Proudly Conservationist. Uniquely Waterberg. Incomparably Kaingo.***

Tel: +27 73 540 7266 | Tel: +27 87 150 1024 | Email: [reservations@kaingo.co.za](mailto:reservations@kaingo.co.za) | Web: [www.kaingosafari.com](http://www.kaingosafari.com)

Address: Witfontein Road | Bulgerivier | Vaalwater | South Africa